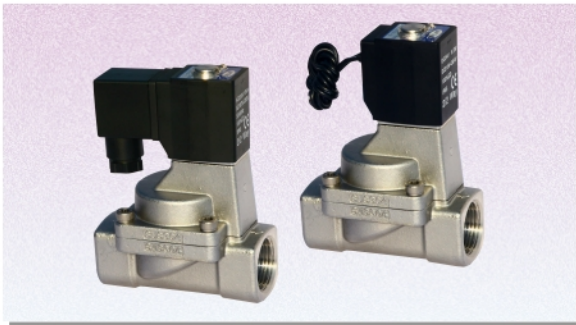


Fluid control valve(2/2way)

2S Series (Internally piloted and normally closed)



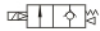
Specification

Type/item	Port size ^①	Orifice size (φ mm)	Cv	Valid area of section(mm ²)	Weight ^② (g)	Operating pressure differentialia		Proof pressure	
						MPa	psi	MPa	psi
2S150-15	1/2"	15.0	5.50	100.0	675	Max: 1.0 Min: 0.05	Max: 150 Min: 10	1.5	220
2S200-20	3/4"	20.0	9.50	170.0	875				
2S250-25	1"	25.0	12.50	220.0	1120				
2S320-32	1 1/4"	35.0	23.00	420.0	2700				
2S400-40	1 1/2"	40.0	31.00	560.0	3250				
2S500-50	2"	50.0	49.00	880.0	4300				

① PT thread, NPT thread and G thread are available.

② The weight in the table is the terminal valve's weight, 2S150-250 series grommet valve's weight is 10g less than terminal's. 2S320-500 series grommet valve's weight is 20g less than terminal's.

Symbol



Product feature

- 1、 2/2 way internally piloted and normally closed type solenoid valve can quickly change the direction and has large volume;
- 2、 It has tight structure, small size and light weight. It is easy to be installed and dismounted;
- 3、 The valve body is made of SUS304 stainless steel. The temperature classification of coil is B. The standard's material is FPM-F; please contact us if other material needed;
- 4、 The levels of protection of the coil are IP65 and the electrical entry includes grommet and terminal.

Specification of coil

Valve type	Coil type	Power	Frequency (Hz)	Voltage range	Electrical entry	Power consumption (VA/W)	Insulation	Temp rise(°C)		
2S150 2S200 2S250	CDA116	AC	50	± 15%	Terminal (CDA)	10.0VA	Class B	35		
			60			8.0VA		30		
	CLA116	DC	-	± 10%		6.5W		30		
2S320 2S400 2S500	CDA170	AC	50	± 15%		Grommet (CLA)		25.0VA	Class B	60
			60					22.0VA		55
	CLA170	DC	-	± 10%				10.5W		40

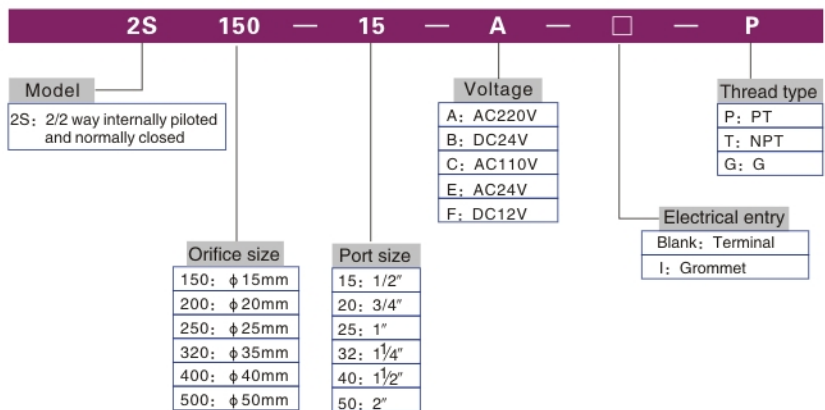
Valve's specification

Acting	Internally piloted				
Initial status	Normally closed				
Adaptable fluid ^①	Air, Water, Oil				
Viscosity limit	Under 20 CST				
Ambient and fluid temperature (°C)		Water	Air	Oil	Ambient
	MAX.	80	90	80	70
	Min.	1	-20 ^②	-10 ^③	-20

① Note: Please refer to PI-79 for detail of other's fluid;

② Note: Dew point: -20 (°C) or less; ③ Note: 50CST or less.

Ordering code



Inner structure

2S150 Grommet

NO.	Item	NO.	Item	NO.	Item	NO.	Item
1	Body	7	Spring	13	Washer	19	Airtight ring
2	Piston	8	Spring	14	E clip	20	Plug
3	Wear ring	9	Screw	15	Movable core	21	Spring
4	O-ring	10	Fixed cap	16	Wear ring	22	Bushing
5	Cover	11	Washer	17	Fixed plate		
6	Screw	12	Coil assembly	18	O-ring		

Ordering code of accessories

Ordering code of accessories is the same as 2W series valve's, Please refer to PI-56 for details of ordering code.

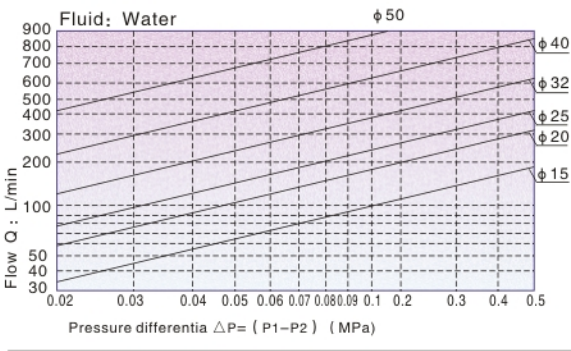
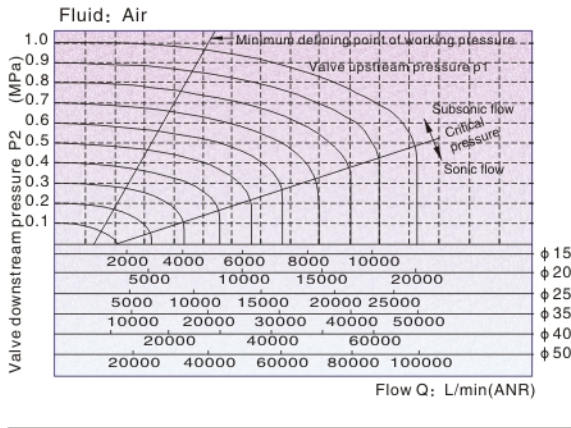
Note: ⚠ 320\400\500 series valves do not have mounting accessories.



Fluid control valve(2/2way)

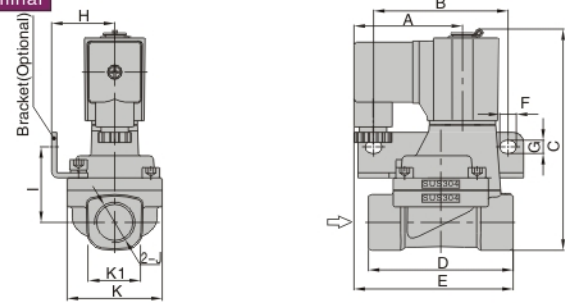
2S Series (Internally piloted and normally closed)

Flow chart

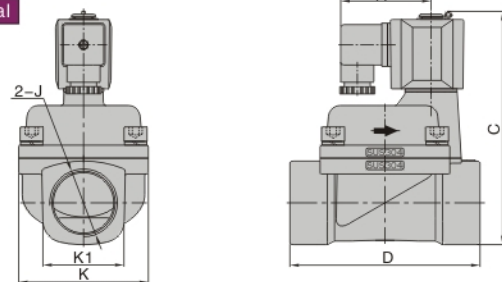


Dimensions

2S150-250 Terminal

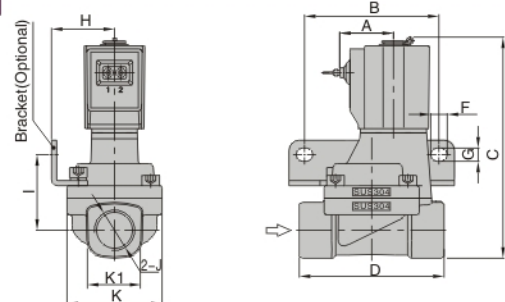


2S320-500 Terminal

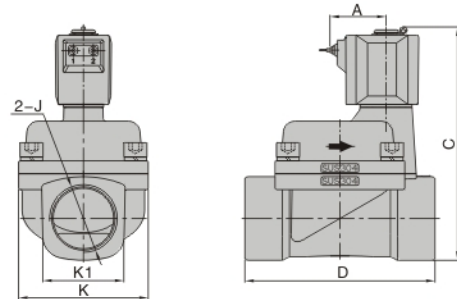


Type/Item	A	B	C	D	E	F	G	H	I	J	K	K1
2S150-15	52.5	65	107	70	77	8	6.4	30.5	36.5	1/2"	46	27.5
2S200-20	52.5	75	115.4	82	78.5	8	6.4	34	40	3/4"	53	33.5
2S250-25	52.5	80	124	92	81	8	6.4	36	44.5	1"	59	40.5
2S320-32	62.7	-	154.3	125	-	-	-	-	-	1 1/4"	80	52
2S400-40	62.7	-	161.8	132	-	-	-	-	-	1 1/2"	90	58
2S500-50	62.7	-	176.8	150	-	-	-	-	-	2"	100	70

2S150-250 Grommet



2S320-500 Grommet



Type/Item	A	B	C	D	F	G	H	I	J	K	K1
2S150-15	26	65	107	70	8	6.4	30.5	36.5	1/2"	46	27.5
2S200-20	26	75	115.4	82	8	6.4	34	40	3/4"	53	33.5
2S250-25	26	80	124	92	8	6.4	36	44.5	1"	59	40.5
2S320-32	38.8	-	154.3	125	-	-	-	-	1 1/4"	80	52
2S400-40	38.8	-	161.8	132	-	-	-	-	1 1/2"	90	58
2S500-50	38.8	-	176.8	150	-	-	-	-	2"	100	70